

NCER EPAS Version 2.8.1 Installation Guide

Introduction

This document explains how to install or upgrade to NCER EPAS Version 2.8.1

Requirements

In order to use NCER EPAS Version 2.8.1 the following are required

- A PC running either Windows 95, 98, NT 4, 2000 or XP
- Microsoft Access 97, 2000, 2002/XP, 2003 or 2007
- A Default Printer known to the PC

Installation

Refer to the flowcharts to decide which type of installation you should use.

For single user applications please use Flowchart A

To set up EPAS as a client / server application please use Flowchart B

To add or upgrade a client to an existing EPAS client / server application please use Flowchart C

Using EPAS As A Client / Server Application

EPAS can be deployed across a network with several users accessing a shared database.

The database resides on the server and the software resides on each Client PC

The software must be installed on each client PC.

All Client PCs must have the same version of Microsoft Access installed.

When upgrading only one client needs to run the upgrade, **Update_2_8_1.exe**, the remainder will be automatically upgraded when they log on.

Important Notes

- Once the application has been updated to Version 2.8.1 then all previous CDs and downloaded databases issued for EPAS, i.e. for Versions 1, 2.0, 2.1, 2.2, 2.3, 2.4, 2.5, 2.6 and 2.7 should be thrown away. This includes both software and data CDs.
- 2007 data must only be imported into a Version 2.8.1 application. Importing it into earlier versions of EPAS will work but the data will be inaccessible and may cause problems.
- Historical data for 1996 through to 2006 is available in Version 2.8.1 format – contact the EPAS Help Desk for details

To reissue data for 1996 to 1999 and the current year incurs no charge.

To reissue data for 2000 to 2006 will incur a charge

- Backup your leap.mdb database

NCER EPAS Help Desk

The NCER EPAS Help Desk can be contacted as follows

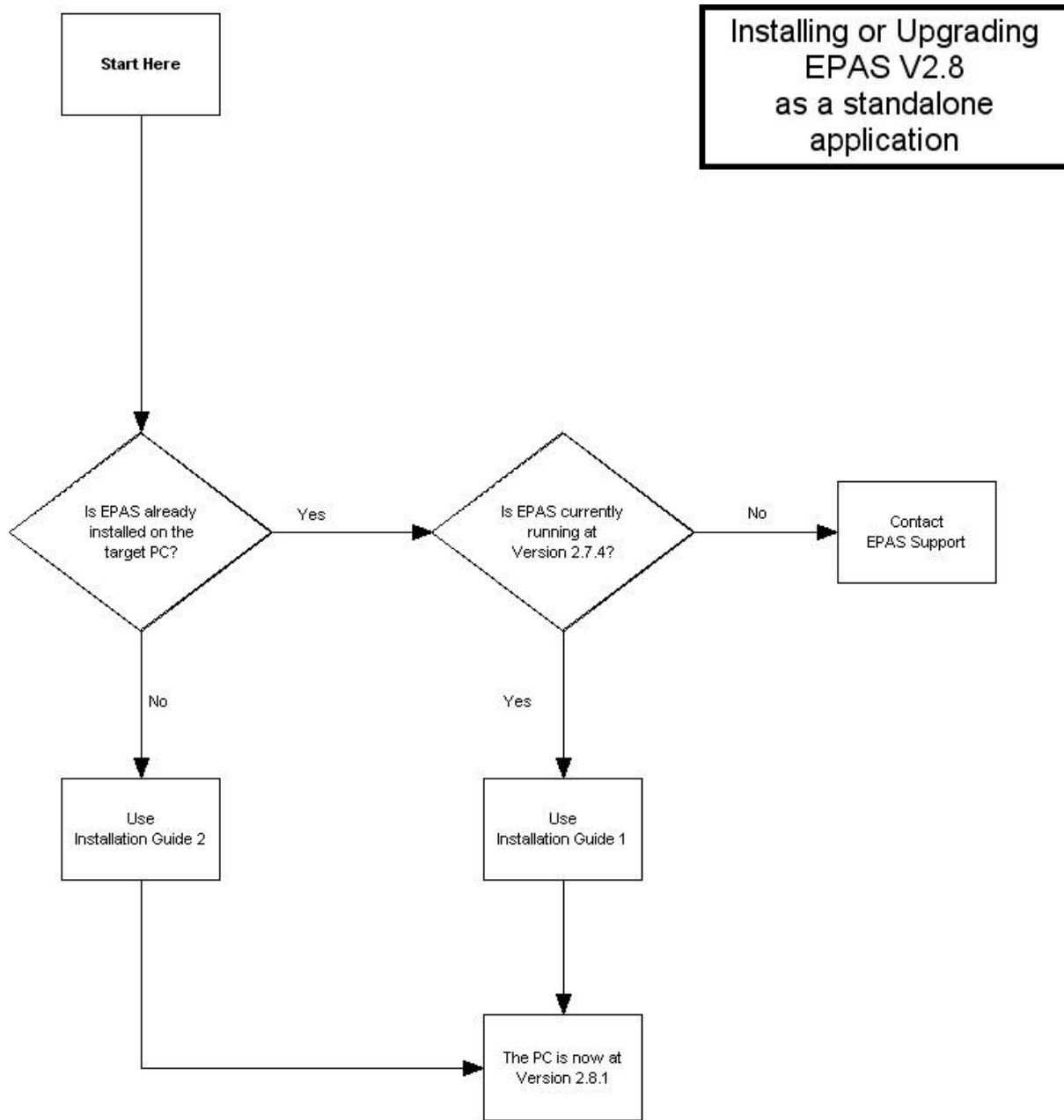
E-mail support@epas.org.uk

Office 01225 388714

Mobile 07967 142521

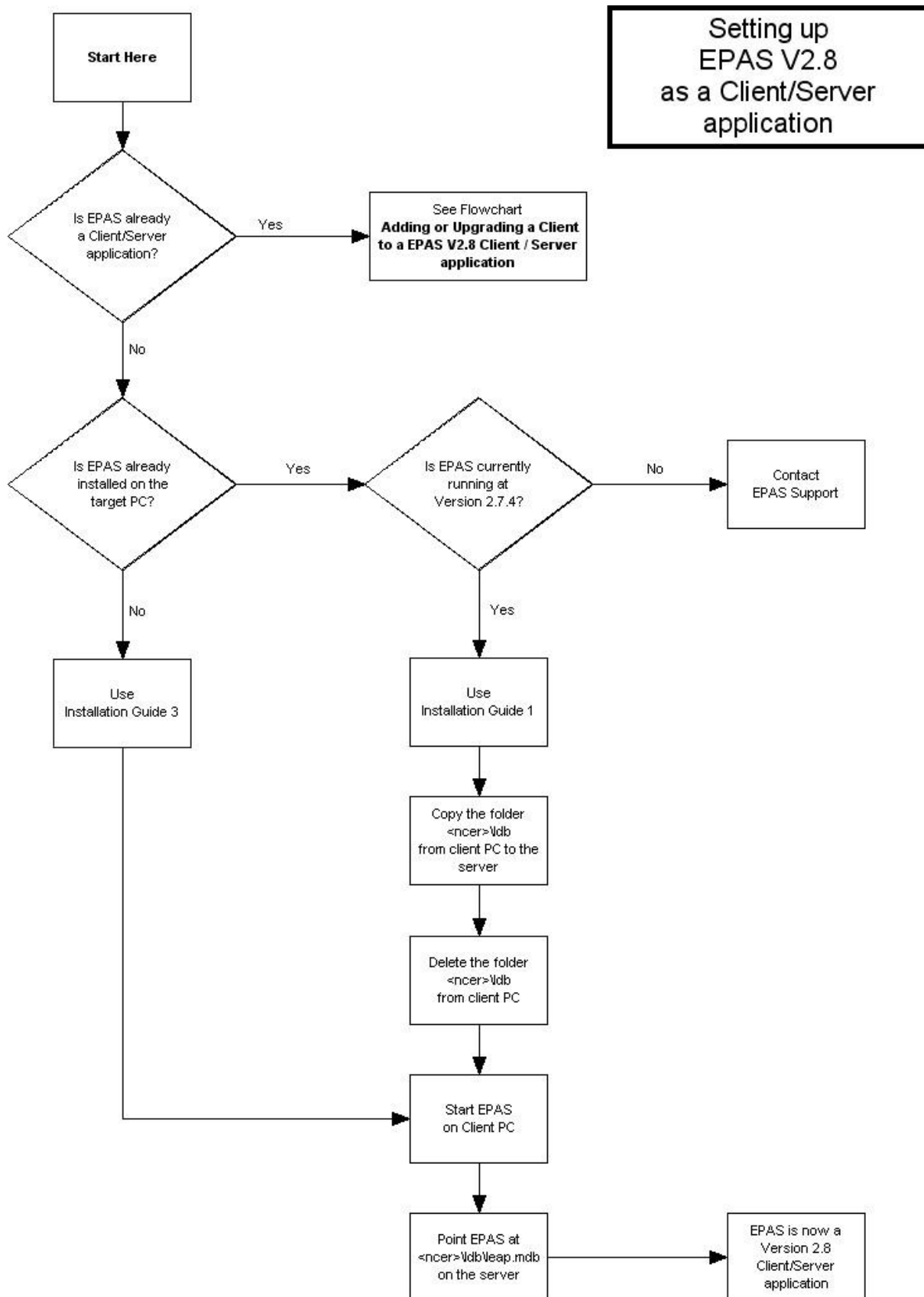
NCER EPAS Version 2.8.1 Installation Guide

Flowchart A



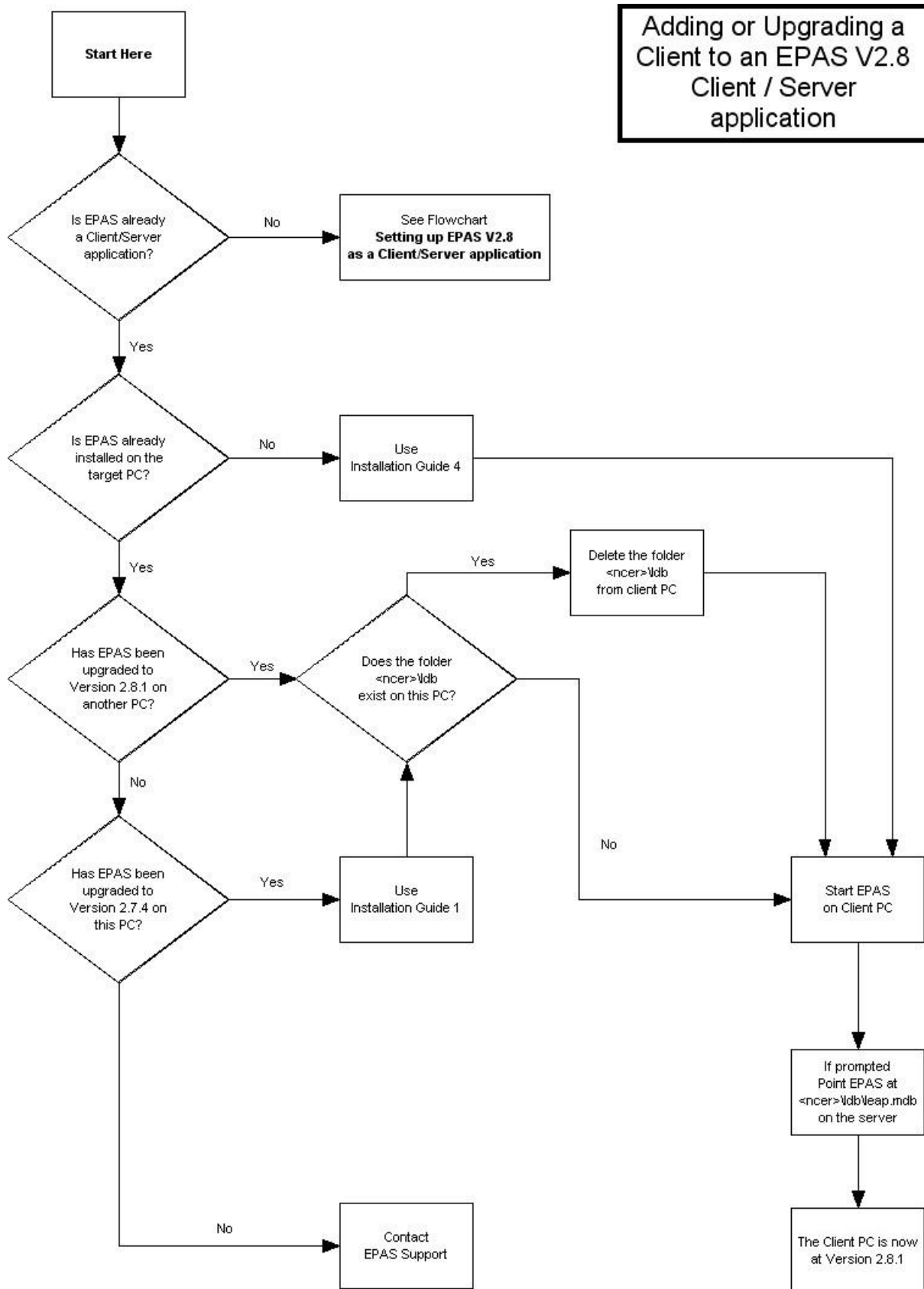
NCER EPAS Version 2.8.1 Installation Guide

Flowchart B



NCER EPAS Version 2.8.1 Installation Guide

Flowchart C



NCER EPAS Version 2.8.1 Installation Guide

Installation Guide 1

This will update EPAS from Version 2.7.4 to Version 2.8.1

1. The installation requires Administrator privileges
2. Download and save http://www.bathdata.com/downloads/update_2_8_1.exe
3. Ensure that EPAS is not running
4. Double Click **update_2_8_1.exe**
5. Start EPAS – the application will now be converted to Version 2.8.1
6. The update is now complete - if there is any data to import it can be imported now

Note:

If you can not download exe files then use http://www.bathdata.com/downloads/update_2_8_1.xex

Installation Guide 2

This will install EPAS Version 2.8.1

1. The installation requires Administrator privileges
2. Download and save http://www.bathdata.com/downloads/epas_setup_2_8_1.zip
3. Unzip **epas_setup_2_8_1.zip**
4. Double Click **setup.exe**
5. Select the installation required depending on the version of MS Access installed
- EPAS for Access nn – Standalone Version
Where nn is either 2007, 2003, XP, 2000 or 97
6. When the installation has finished start EPAS
7. The installation is now complete - if there is any data to import it can be imported now

Installation Guide 3

This will install EPAS Version 2.8.1

There are 2 parts to this installation, Server set-up and Client set-up

Server Set-up

This installs the empty database files on the server – no software is installed on the server

Client Set-up

This installs the software onto the Client PC

1. The installation requires Administrator privileges
2. Download and save http://www.bathdata.com/downloads/epas_setup_2_8_1.zip
3. Unzip **epas_setup_2_8_1.zip**
4. Double Click **setup.exe**
5. Select the server as the Destination Location
6. Select the installation required depending on the version of MS Access installed
- EPAS for Access nn – Server Version
Where nn is either 2007, 2003, XP, 2000 or 97
7. When the installation has finished double click on **Setup.exe** again
8. Select the client PC as the Destination Location
9. Select the installation required depending on the version of MS Access installed
- EPAS for Access nn – Client Version
Where nn is either 2007, 2003, XP, 2000 or 97
10. When the installation has finished start EPAS
11. EPAS will ask for the location of the database
12. Navigate to the folder on the server selected in 5 above
13. Double-click on leap.mdb
14. The installation is now complete - if there is any data to import it can be imported now

NCER EPAS Version 2.8.1 Installation Guide

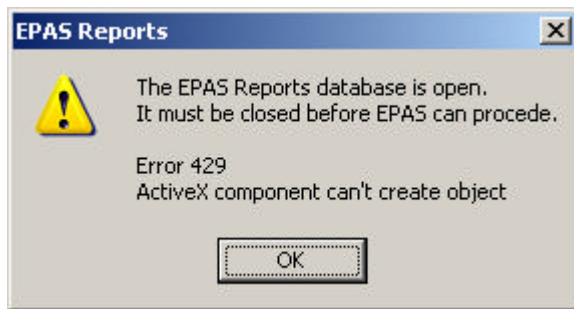
Installation Guide 4

This will install EPAS Version 2.8.1 As A Client

1. The installation requires Administrator privileges
2. Download and save http://www.bathdata.com/downloads/epas_setup_2_8_1.zip
3. Unzip **epas_setup_2_8_1.zip**
4. Double Click **setup.exe**
5. Select the installation required depending on the version of MS Access installed
- EPAS for Access nn – Client Version
Where nn is either 2007, 2003, XP, 2000 or 97
6. When the installation has finished start EPAS
7. EPAS will ask for the location of the database
8. Navigate to the folder on the server containing leap.mdb
9. Double-click on leap.mdb
10. The installation is now complete

NCER EPAS Version 2.8.1 Installation Guide

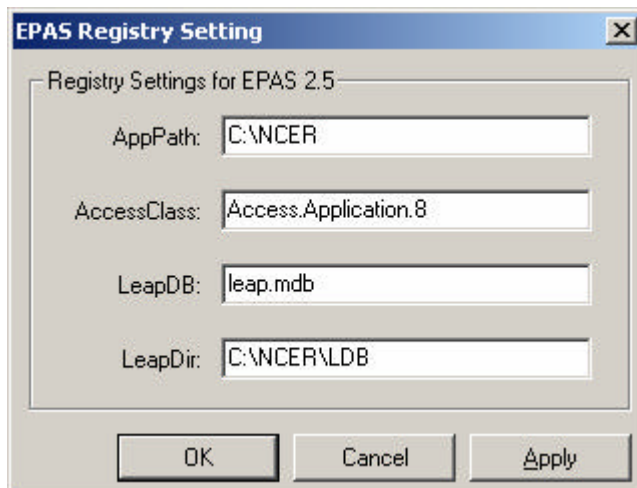
A Common EPAS Error



This error is caused by EPAS attempting to use a different version of MS Access to the one installed on the pc.

This is due to a) the user clicking Next, Next, Next etc during installation without selecting any options or b) MS Access being upgraded

1. Run c:\ncer\lepasregistry.exe
2. Select Version 2.8
3. Click Details



4. The value of AccessClass should be Access.Application.n where n is
 - 8 for MS Access 97
 - 9 for MS Access 2000
 - 10 for MS Access 2002 / XP
 - 11 for MS Access 2003
 - 12 for MS Access 2007
5. Change if required and click OK

NCER EPAS Version 2.8.1 Installation Guide

EPAS File System

This is a list of the core files and folders used by EPAS.

The top-level folder contains the following

Backup	Folder to hold backups made during updates or table imports
LDB	Folder containing the data
Files	Folder to hold miscellaneous files
Ncer.exe	Application file
Ncer_hlp.chm	Help file
Uninst.isu	Installation file
EPAS_SW_Update.exe	Internal EPAS application file
EPASRegistry.exe	EPAS Registry tool
EPASConv97to2k.exe	EPAS conversion tool for MS Access 97 to MS Access 2000 / XP

The LDB folder contains the following

Update	Folder contain all updates applied to the application
Leap.mdb	MS Access dB holding data for the LEA
Leapbase.mdb	MS Access dB holding metadata for the application
Leaptemp.mdb	MS Access dB used to hold reports etc
Leapreports.mdb	MS Access dB holding reports
Epas_ksn_Layout.grx	Grid Layout for Key Stage n results

There are several other files that may be held within the EPAS file system, e.g. graphical files, vapourware programs, readme files etc. They can be ignored.

Really Important Note

The single most important file in the EPAS application is the database, **LEAP.MDB**, as this contains all of the data for your local authority.

The EPAS Help Desk can rebuild the file but it will take both time and money.

MAKE SURE YOU BACK UP LEAP.MDB FREQUENTLY